



WITH OPEN ARMS

MAR-LU-RIDGE



A CAMPAIGN FOR MAR-LU-RIDGE
» 2023-2024

Friends of Mar-Lu-Ridge,

God is moving through and among this ministry. For scores of summer campers, youth, adults, and families, Mar-Lu-Ridge is a place of sanctuary. It is a place where the noises and distractions of the world fall away, allowing space to engage with God's created world, to hear God's reassuring promises. What a welcome gift in these times!

We are a community with a rich legacy. Our retreat groups and campers are diverse and faithful. As we build on the commitments of leaders and supporters from the last 63 years and position Mar-Lu-Ridge for a strong and vibrant future, we are renewing our efforts to provide a safe and inclusive environment which reflects the lessons Jesus taught us: To love one another, even as I have loved you. (John 13:34)

The plan shared in the following pages is a big step for Mar-Lu-Ridge, but one that will have even greater return on our investment in welcoming people to encounter God's love through sacred hospitality, deepening relationships, and care for creation. Through this plan, we will be able to serve people in ways we are unable to at this time – especially groups and individuals with mobility needs. When these campaign initiatives are completed, the manner in which we welcome people will be more fully realized.

I am energized by the work of the Holy Spirit in the lives of youth and adults of every walk of life and by the restoring messages of God's grace and love which will frame the way we think of each other and of ourselves. The impact of Mar-Lu-Ridge lives on in generations of campers, retreat guests, staff alumni, and our congregations.

I hope you'll join in this campaign for Mar-Lu-Ridge—for the future of our ministry throughout the region and beyond.

God's peace,

Sarah Lefler

Executive Director

MAR-LU-RIDGE VALUES »

Community. We are One Body that encourages, educates, mentors, loves unconditionally, and prays for each other.

Service. We believe in the benefit of educating our campers about organizations and people who work in the community and in the church to assist people in need, and to offer opportunities for our campers to improve the lives of others through service projects, prayer, and financial support.

Sanctuary. We will maintain the safety and wholeness of our natural space, respecting all life within – human, fauna, and flora. Mar-Lu-Ridge has been powered by 100% wind energy since 2017. In 2021, we entered into a Conservation Easement with the Maryland Department of Natural Resources, preserving the land for generations to come.

INCREASING OUR HOSPITALITY »

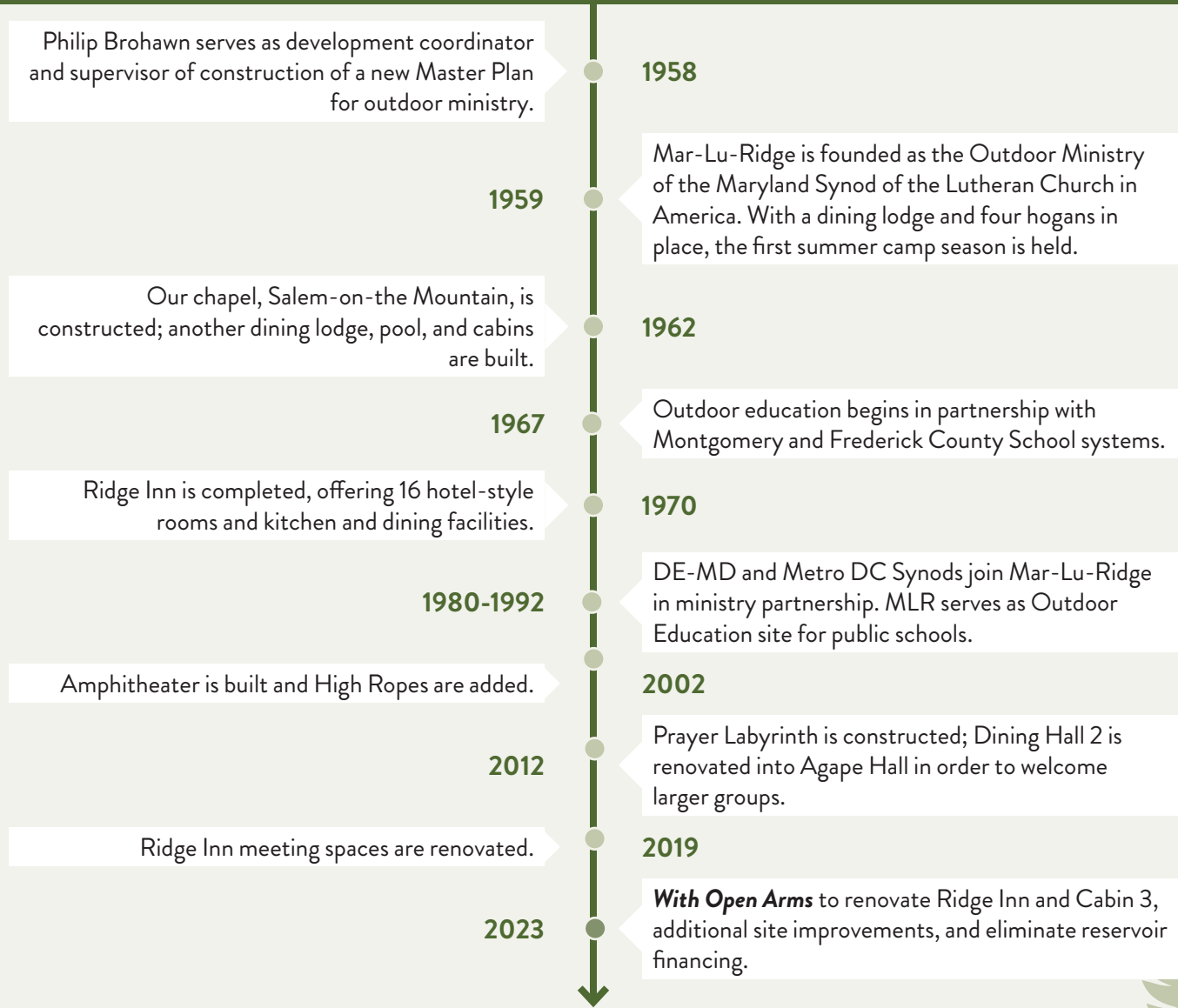
Despite our desire for Mar-Lu-Ridge to be a place that welcomes all people, some of our spaces do not reflect this commitment. Unintentionally, some areas of our buildings limit accessibility and full participation. Increasingly we turn guest groups away because we are unable to meet their accessibility needs.

This is not the hospitality we claim. This does not reflect our aim in welcoming all people to engage in this sacred place.

As we plan for the future of MLR and the next generation of outdoor ministry, we are committed to be good stewards of our spaces and resources by:

- » improving accessibility for all visitors and guests,
- » refreshing spaces within our existing footprint that will honor our commitment to conservation while better serving our ministry,
- » clearing the remaining debt for the reservoir to position MLR for strong financial footing.

MAR-LU-RIDGE TIMELINE »



IMPROVING OUR WELCOME »

As contributions to the **With Open Arms Campaign** are received, we have prioritized the following improvements to increase MLR’s hospitality, inclusion, and accessibility for all people.

1. We will make the Ridge Inn fully accessible for all guests and visitors. An elevator will be installed so that guests with mobility needs may easily and safely access the top floor. Adding public restrooms on the lower level and installing automated doors will expand our hospitality in new ways.
2. Next, we plan to improve Cabin 3—our most-requested, most-used cabin—with an accessible restroom and a refreshed interior. Siding will replace the log exterior to prevent further decay from pests.
3. Carpenter bees have damaged a significant portion of Potomac Lodge’s exterior log structure. New concrete siding will be added to protect this building.
4. Cabins 1 and 2 are beyond repair and are no longer in use. These buildings will be removed to allow for increased green space.

The old swimming pool at Area 3 is no longer serviceable. We plan to remove this feature and level the ground for group gathering space. This area is in near-constant use thanks to renovations and upgrades by MLR staff. In time, we will develop this space with an accessible pavilion.

5. In 2020, MLR secured the main camp water reservoir, which was leaking. Gifts to the **With Open Arms Campaign** will help to quickly clear the remaining \$220,000 debt acquired for the reservoir development.

ESTIMATED COSTS

Ridge Inn Accessibility	\$1,000,000
Cabin 3 Improvements	\$ 230,000
Potomac Lodge Siding	\$ 200,000
Pool and Cabins Removal	\$ 100,000
Pavilion	\$ 250,000
Reservoir Debt retirement	\$ 220,000
PROJECT TOTAL	\$ 2,000,000

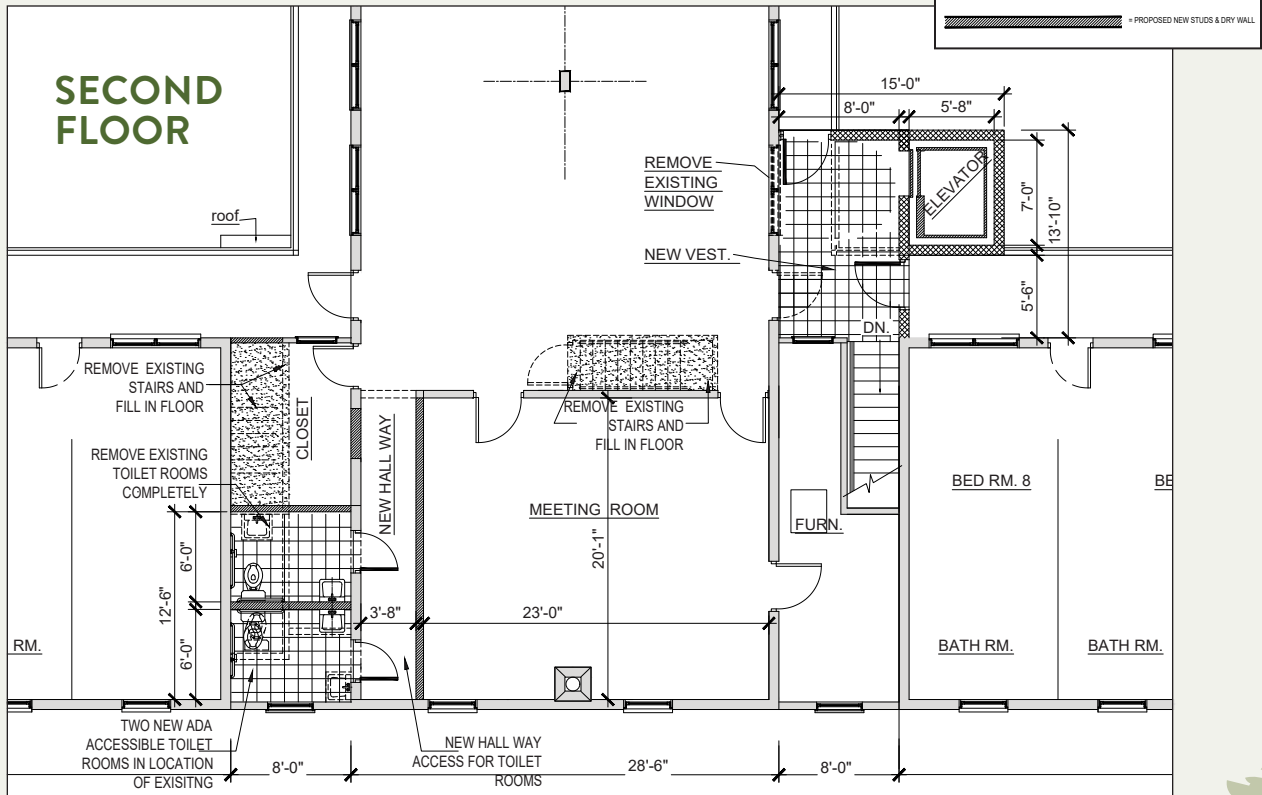
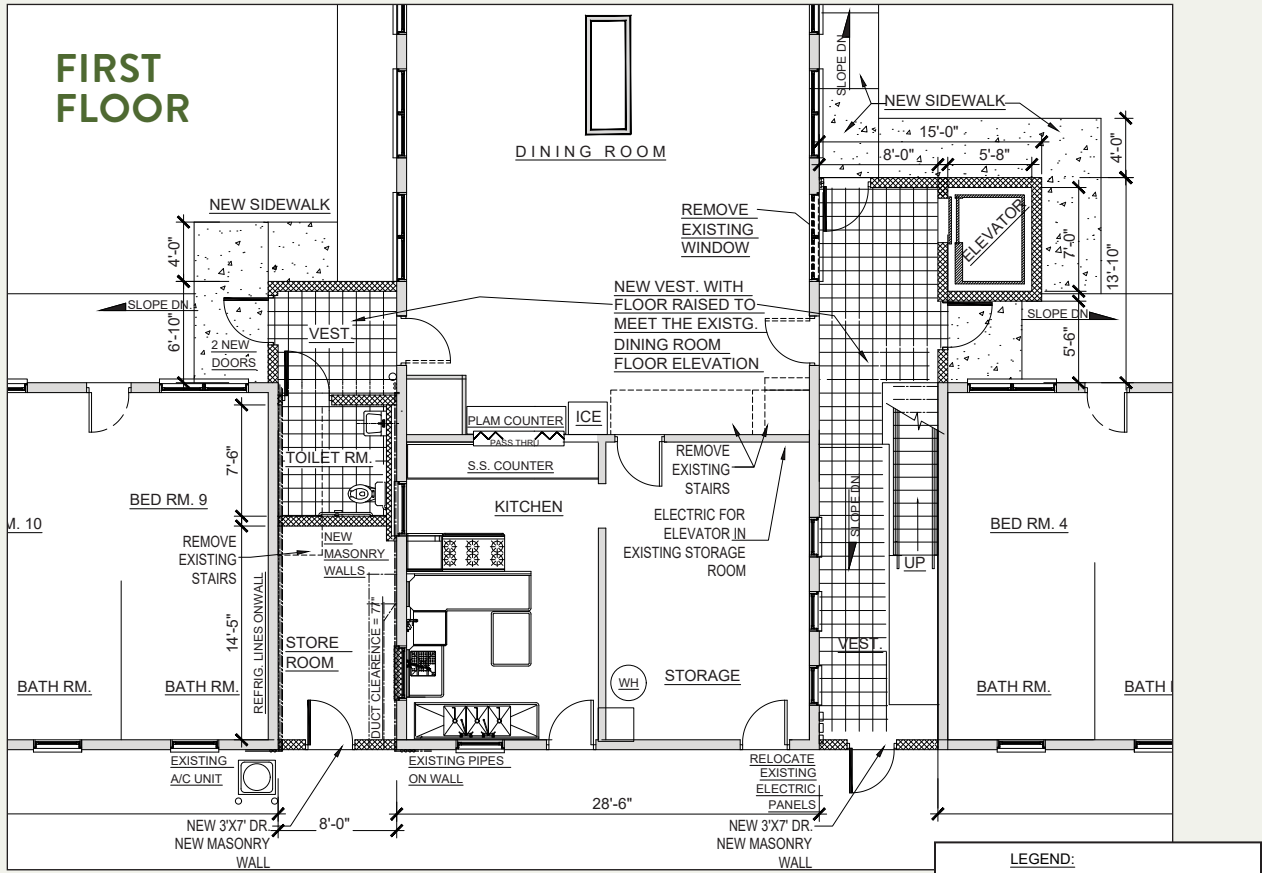
“Lutherans believe that we are called into a relationship with God where God’s promise of steadfast love and mercy, embodied in Jesus, draws us to a life of trust in God and to acts of service in our daily lives. Mar-Lu-Ridge manifests this belief with its mission to welcome all to encounter God’s love through sacred hospitality, deepening relationships, and care for creation. When we join together as individuals and congregations to make needed improvements to Mar-Lu-Ridge, we engage in grateful service that will help ensure Mar-Lu-Ridge’s continuing mission as a safe and inclusive environment that welcomes all people.”

- LeeAnn Hart, Congregations Co-chair, Metro DC Synod

CHALLENGE GOAL »

With funds contributed in excess of the campaign goal, bathrooms and furniture throughout Ridge Inn will be renovated and replaced. MLR will refresh as many of these spaces as financial resources are available.

RIDGE INN ACCESSIBILITY IMPROVEMENTS »



WELCOMING WITH OPEN ARMS »

The Board of Directors has authorized the **With Open Arms** capital campaign to provide the funding necessary for these site improvements.

Contributions are sought in the form of cash, appreciated marketable securities, land, or other assets that can be readily converted to cash. If you would like to make a non-cash gift, please contact Sarah Lefler, Executive Director, for transfer and broker information.

Gifts will be received from individuals, families, businesses, organizations, foundations, and congregations. Friends of the Mar-Lu-Ridge community are invited to respond, as able, with a three-year commitment to this effort. However, gifts extending beyond three years are certainly welcome, as are one-time contributions and gifts made over a shorter timeframe.



“This is the right time to upgrade the camp, to make it available to everyone, because we want to welcome people for whom these last few years have been difficult. So many of us were isolated during the covid pandemic. Our relationships got stretched out and disrupted. We want and we need to reconnect, and doing this in a safe, warm, loving community of faith will be life-giving for lots of people if we make our space work for them all.”

- Rev. Richard Graham, Honorary Campaign Chair

In order to fully subscribe funding needed for site improvements, the following gifts and in the quantities listed, will need to be received from individuals, families, foundations, and congregations:

\$2,000,000 CAMPAIGN - ESTIMATED GIFT CHART

SIZE OF GIFT	NUMBER NEEDED	TOWARD GOAL
\$200,000	1	\$200,000
\$150,000	2	\$500,000
\$100,000	2	\$700,000
\$75,000	4	\$1,000,000
\$50,000	6	\$1,300,000
\$25,000	8	\$1,500,000
\$15,000	10	\$1,650,000
\$10,000	15	\$1,800,000
\$5,000	20	\$1,900,000
\$3,000	23	\$1,969,000
\$1,095	29	\$2,000,755
TOTAL	120	\$2,000,755

“I have personally known the transformative role that Mar Lu Ridge can have in one’s life and faith formation. I am committed to helping Mar Lu Ridge continue to do the same for others now and in the future. The goal of this campaign is to be able to further enable the ministry to be a place of welcome and inclusion for the people of God. I am happy to financially support this important project.”

- Rev. Matt Fuhrman,
Congregations Co-Chair,
DE-MD Synod

MAR-LU-RIDGE LEADERSHIP »

BOARD OF DIRECTORS

Rev. Matthew Fuhrman
Rev. Kate Davidson
David Garman
Dr. Anthony Kerlavage
Rev. Dan Roschke

Rev. Kathy Ierien

Madison Baber
Caitlin Muhlbach
Bishop William Gohl
Bishop Leila Ortiz
Dr. Julie Nelson

CAMPAIGN STEERING TEAM

Dr. Anthony Kerlavage
Rev. Richard Graham, Bishop Emeritus
Rev. Matthew Fuhrman
LeeAnn Hart
Sarah Lefler



MAR-LU-RIDGE MISSION

Rooted in Christ, we welcome all to encounter God's love through sacred hospitality, deepening relationships, and care for creation.



MAR-LU-RIDGE
CAMP & RETREAT CENTER

3200 Mar Lu Ridge Road
Jefferson, MD 21755

☎ 301.874.5544

✉ mlr@mar-lu-ridge.org