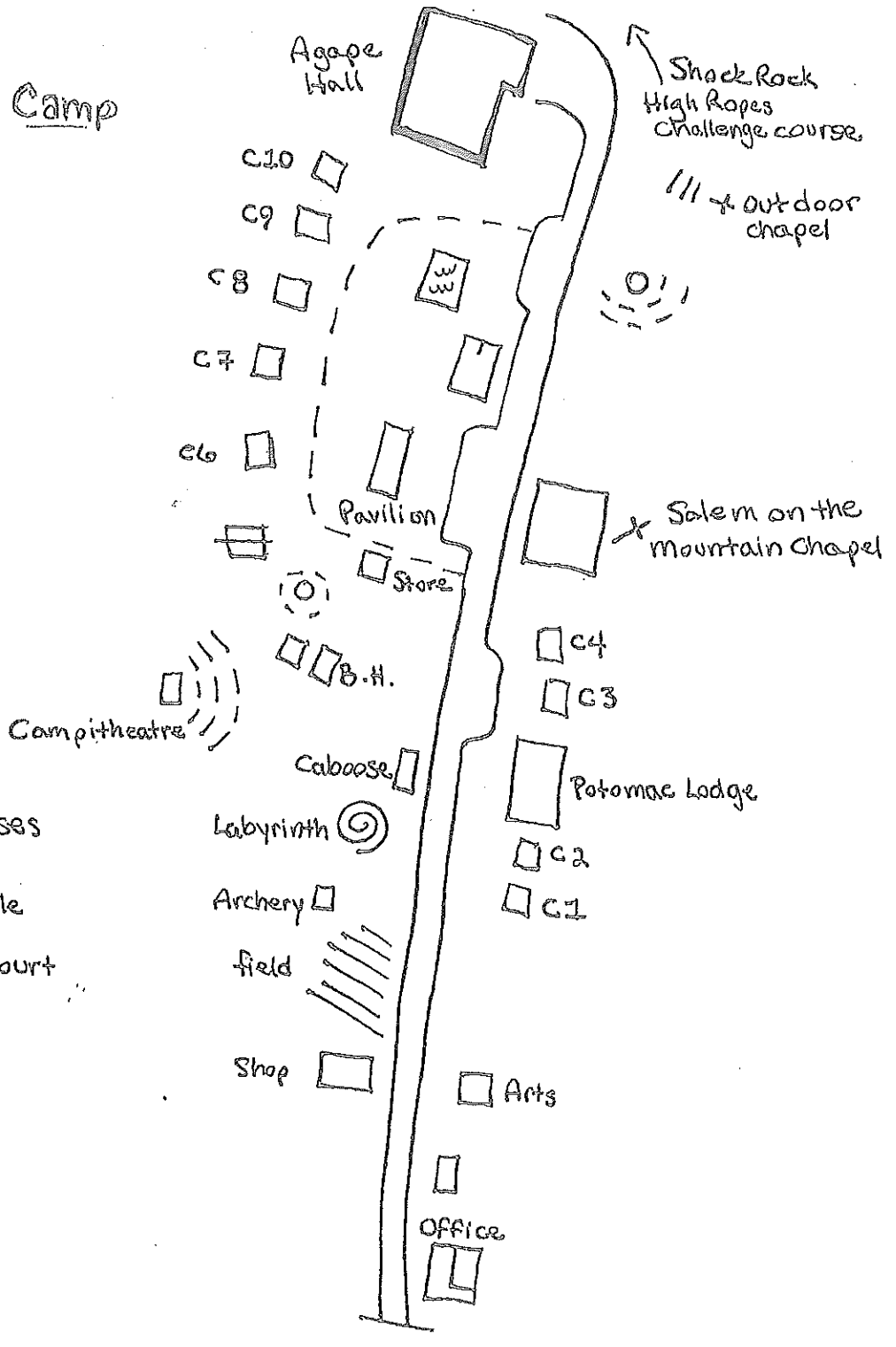
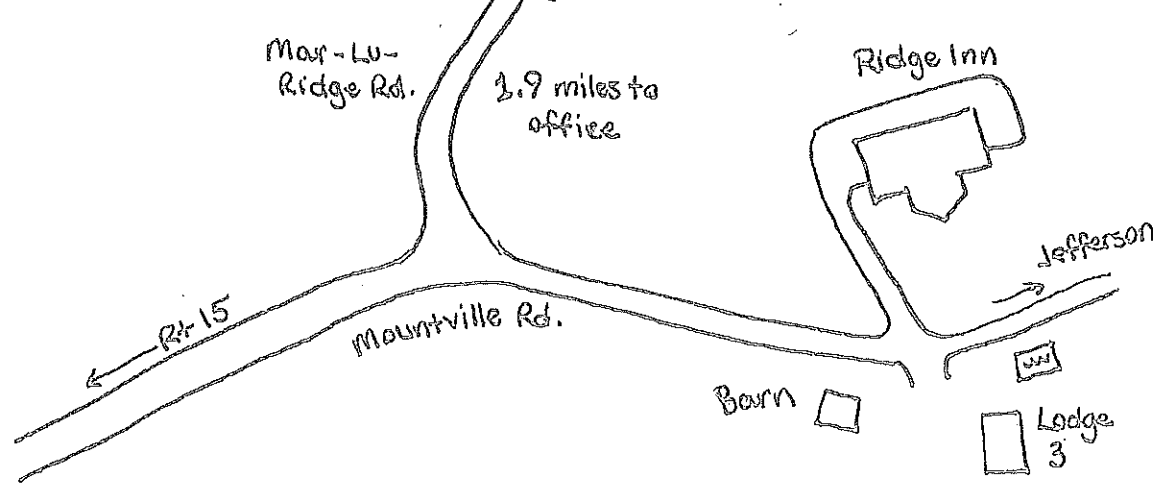
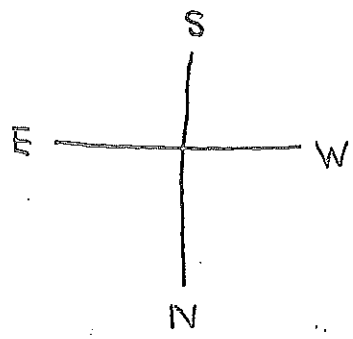


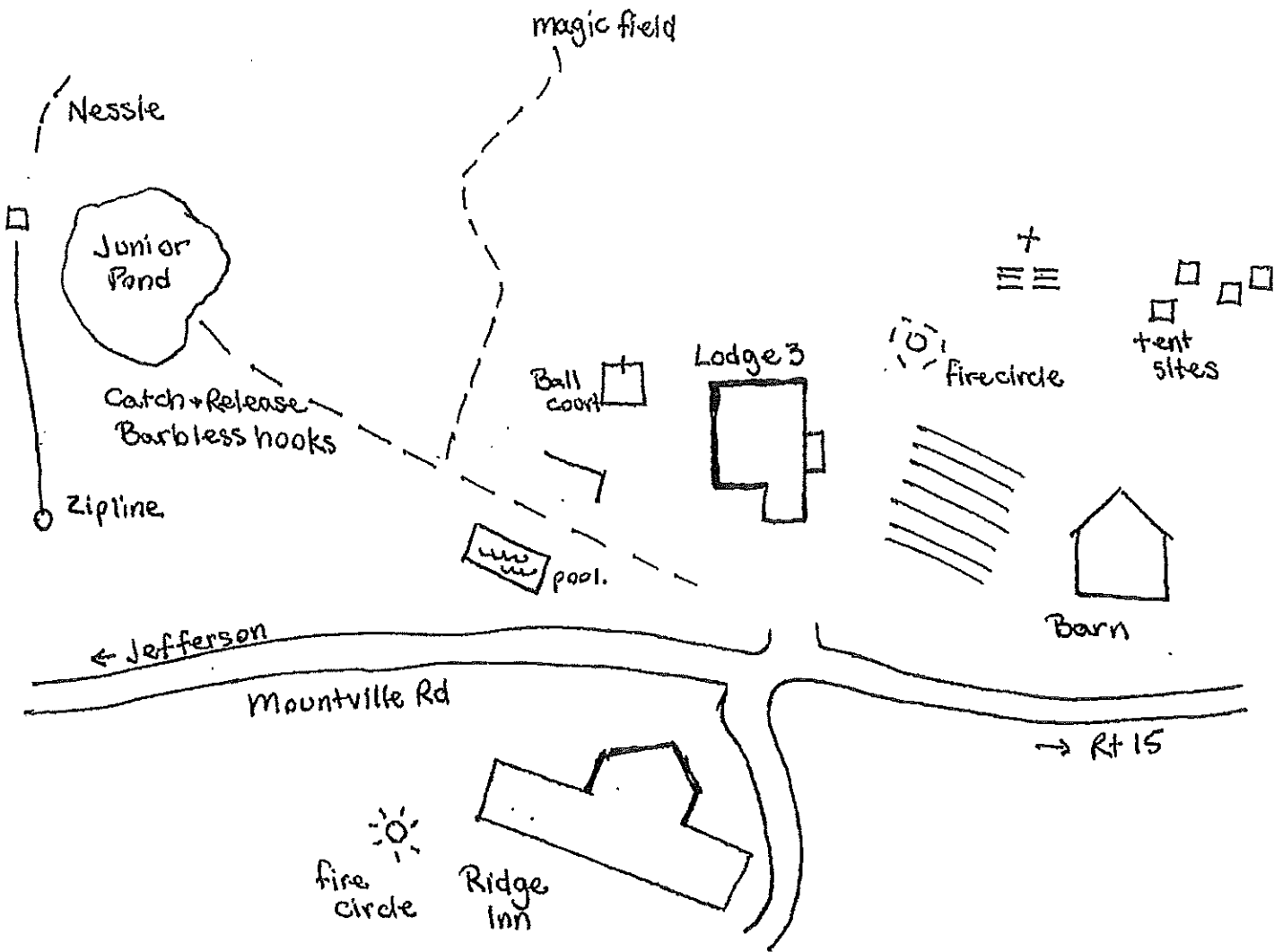
Main Camp



- B.H. = bunkhouses
- ww = pools
- ⊙ = firecircle
- = Ball court



Area 3 and Ridge Inn Mar-Lu-Ridge



Trail Guide Mar-Lu-Ridge

SHOCK
ROCK

Rock climbing
Area

Yellow

(0.6 miles)

Shack Rock trail
(0.4 miles)

Apple
Hall

MUST
TURN!

Blue
Trail

(0.4 miles)

Red Trail

(0.4 miles) Very steep

Field

Area 3
trail
2.5 mi.

Shop

Office

3 Ponds

Catch + Release
Barbless hooks

Please stay on trails
be careful on rocks
at Shock Rock
Pack out all trash

